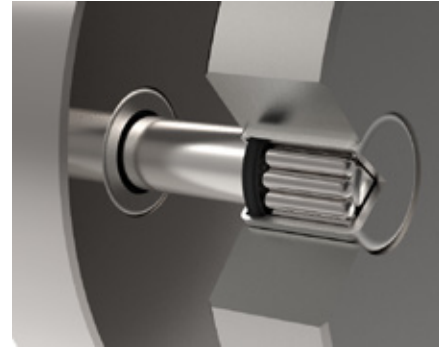


Sealed, Closed One End, High Capacity Bearing

The Challenge:

A US industrial motion control customer was looking to add high capacity, closed one end, sealed bearings to an existing lineup of products to extend product life by adding corrosion protection and grease retention.



Analysis:

In order to achieve maximum capacity, a full complement design was needed. However, Koyo Brand Bearings' standard product offering did not include a bearing that could meet all of the customer's needs.

Koyo's Solution:

Working closely with Koyo manufacturing to evaluate all design options, our team of engineers identified a way to combine an existing cup and seal with a new roller and a new assembly process to address all of the customer's specifications.



Result:

The new bearing exceeded all of the customer's internal test requirements, and the innovative new design has created new business opportunities for customers with similar needs, such as:

Applications where there is potential exposure to contaminants or where there may be exposure to harsh fluids.

